

## Replacing Fireside Franklin Pilot Assembly

**This procedure should only be performed by a qualified gas technician.** Please read all the instructions before beginning the procedure. Confirm that you have all the necessary tools and materials. If you have any questions technical support is available toll free at 1-800-866-4344, Monday- Saturday 9:00- 5:00 E.T.

### Tools Needed:

- 5/32" allen wrench
- 5/16" nut driver
- 3/8" wrench
- 7/16" wrench or nut driver
- Phillips screwdriver
- Small flat blade screwdriver

### Materials Needed:

- Cera-felt gasket material part # G-335
- Replacement Pilot assembly, part # G-206L (LP) or G-206N (NG)

Make sure the stove is cool. Shut off main gas supply to the stove.

1. Remove the front casting. Lift straight up under the two sets of star decorations and swing the bottom toward the front of the stove. Set aside.



2. Remove the glass front. Pull and twist the spring-loaded clips to release the glass.



3. Use a 7/16" wrench or nut driver to remove the glass retainer at the bottom front of the firebox.



4. Remove the bolt that holds the burner in place. It is at the bottom center of the firebox and will be visible once the glass retainer is removed.



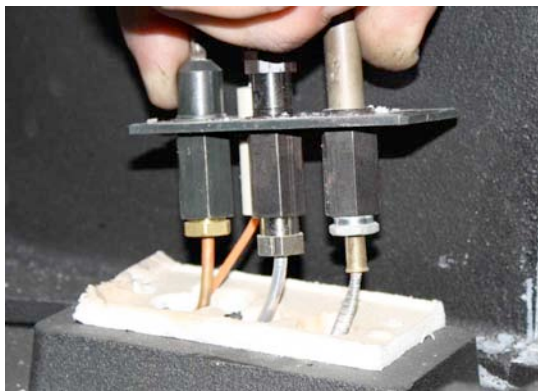
5. Very carefully remove the log set. It is very fragile and should be supported with two hands under the base. If the base of the log set is damaged the log set should be replaced.



6. Lift the burner out of the firebox. Lift the front edge first then pull it up and out of the firebox. Natural gas stoves will have a narrow air shield attached to the burner. (see picture on the next page)



7. The pilot assembly is located at the right side of the firebox.
8. Remove the screws that hold the pilot assembly in place, and gently lift the assembly up.

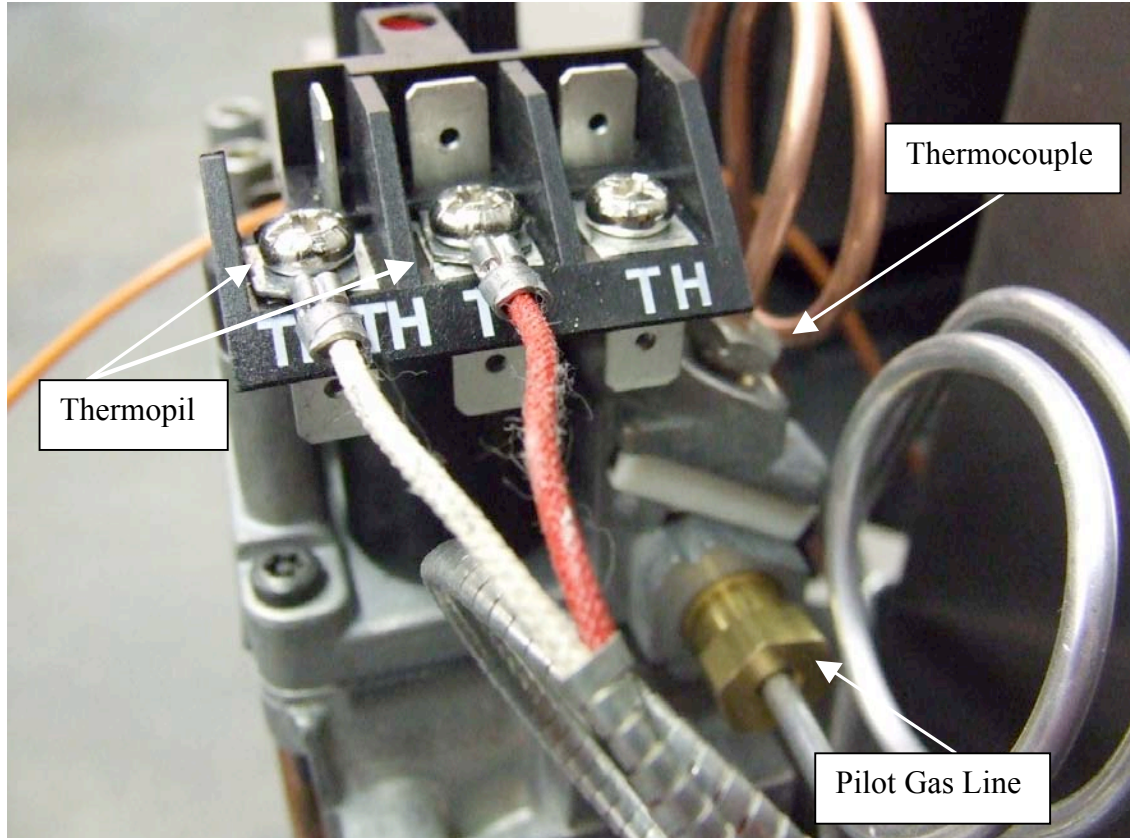


9. Remove the old gasket material from under the pilot assembly and discard.
10. At the rear of the stove, remove the control cover using a  $5/32''$  Allen wrench and a  $5/16''$  nut driver.

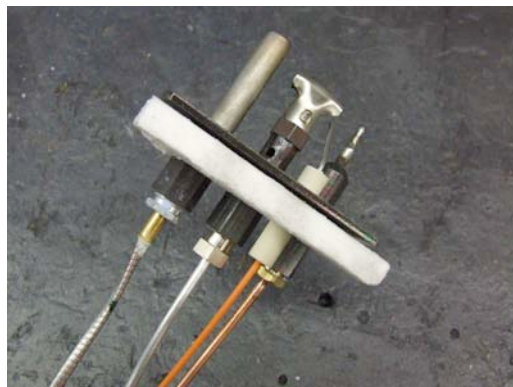


11. Lift the cover upward away from the knobs and disconnect the wire from the underside of the piezo igniter. The on/off switch may remain connected.

12. Set the cover aside.
13. Use a 3/8" wrench disconnect the brass fitting on the copper colored lead going into the control valve. This lead is connected to the thermocouple.

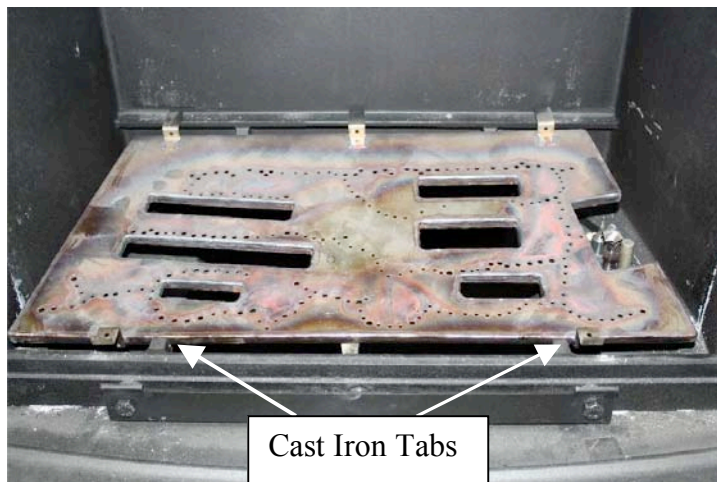


14. Use a 7/16" wrench to disconnect the pilot gas line.
15. Disconnect the thermopile leads (white and red wires) from the terminals on the gas valve with a Phillips screw driver.
16. Straighten the wires and gas line. Feed them through the base of the stove as you remove the pilot assembly from inside the stove. Make note of where the replacement connectors on the new pilot assembly will pass through the base of the stove.
17. Slide the new gasket onto the replacement pilot assembly. Be sure that it is properly aligned with the mounting holes and the base of the pilot assembly.

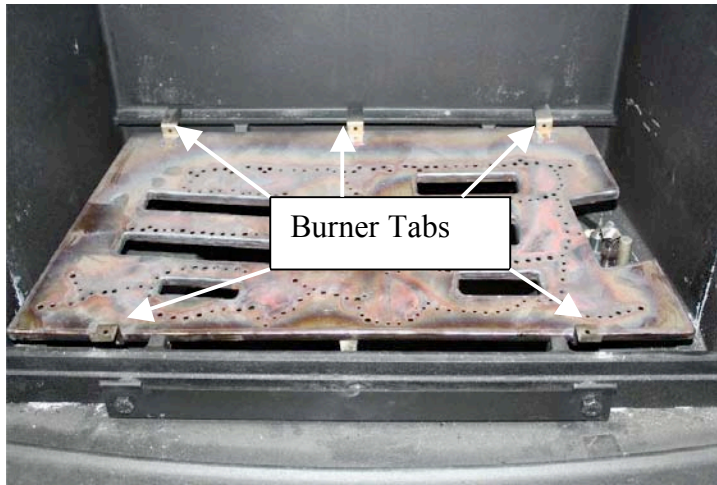




18. From inside the firebox, guide the connections through the base of the stove and out the back near the gas valve. **Be very careful to not kink the pilot gas line.**
19. Once the connections are through the back of the stove, secure the pilot assembly to the stove base. One at a time, wrap the extra length of wires and gas line around a D cell battery (or something of a similar size) to keep the extra material out of the way. **Be very careful to not kink the pilot gas line.**
20. Connect the thermocouple (copper) lead first. This connection may be difficult to get started, but it is imperative that it is properly threaded. Proceed to the pilot gas line and thermopile connections. All fittings should be secure but do not over tighten.
21. Test the stove before replacing the control cover. Attach the igniter wire to the piezo temporarily. Turn the main gas supply on. Be sure that the Pilot will light and stay lit once the thermocouple has been given 15-30 seconds to warm up. Test for gas leaks along the pilot gas line. **DO NOT TURN THE MAIN BURNER “ON” WHILE THE BURNER PAN IS REMOVED FROM THE STOVE!**
22. Turn off the main gas supply. Remove the igniter wire from the piezo. Place the control cover over the control knobs and reconnect the wire to the igniter button. *Note: The reason you place the cover over the knobs before you connect the wire is that the wire is too short to connect it first.*
23. Fasten the control cover to the rear panel of the stove.
24. Return the burner to the firebox. The venturi tube must be centered on the orifice at the rear of the firebox. When the burner is properly located there should be no side to side or up and down movement at the back edge. It should be firmly seated on the cast iron tabs in the firebox. The tabs at the front of the firebox are notched and the burner should sit down in the notches. Once in place, secure it with the bolt through the front of the firebox.



25. Install the glass retainer.
26. Very carefully return the log set to the stove. Proper placement of the log set is important to ensure good stove performance and flame appearance. The burner has five elevated tabs (three along the back edge and two along the front edge) that keep the base of the log set from resting directly on the surface of the burner. Be sure the log set is as far back in the firebox as possible. The front tabs have small vertical sections that should be visible in front of the log set base.  
**Improperly placed log sets can result in low or irregular flames as well as excessive carbon build up.**



27. Return the glass to the stove and secure it with the spring-loaded clips. It may be helpful to use needle-nosed pliers to grip the clips.
28. Return the front casting to the stove.
29. Turn on the main gas supply and test for gas leaks, operation of the pilot, and main burner.
30. **Please contact Woodstock Soapstone Co. for any assistance during this replacement process at 1-800-866-4344.**

**We need your help!** Woodstock Soapstone Co. takes pride in providing the highest quality products as well as the best customer service in our industry. We welcome your suggestions and input to help us achieve these goals. If you have any comments to improve our products, service, and information provided in these instructions please contact us at (800) 866-4344 or [info@woodstove.com](mailto:info@woodstove.com). **Thank you.**

Revised 7/11/11